

November 2024

DATA FOR IMPACT

D4I Monitor



Participants at the IUSSP Expert Meeting in Mombasa, Kenya, March 2024.

Advancing the Global Monitoring and Evaluation (M&E) Agenda

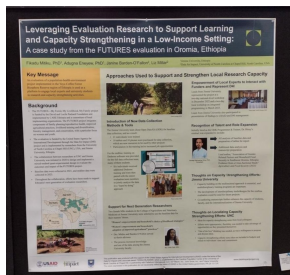
D4I drives the global M&E agenda forward by partnering with USAID, WHO, other global organizations, and technical working groups to contribute thought leadership and expertise in evaluation and localization. Within countries, D4I engages local actors in evaluation design, implementation, analysis, and dissemination while promoting sustainability through evidence-informed approaches and adaptable tools. This newsletter highlights a suite of tools, methods, and resources that are available and adaptable for evidence generation to improve decision making.

EVENTS

Conferences

[American Evaluation Association \(AEA\) Conference 2024](#)

In October, D4I presented at the AEA Conference in October in Portland, Oregon on “Leveraging Evaluation Research to Support Learning and Capacity Strengthening in a Low-Income Setting: A Case Study from the [FUTURES Evaluation](#) in Oromia, Ethiopia.”



Poster session at the AEA Conference 2024. @ 2024 Janine Barden-O'Fallon

[Global Digital Health Forum \(GDHF\) 2024](#)

D4I will host a [virtual workshop](#) on the “[Private Sector Engagement Self-Assessment Monitoring \(PSE-SAM\) Tool](#)” at the Nairobi-based GDHF conference on December 3, 2024, from 6:00-7:00 pm GMT / 9:00-10:00 pm EAT.

RESOURCES



Supporting the WHO in Routine Health Data Analysis and Using World Health Organization (WHO) Facility Guide Resources

D4I and GEMNet-Health supported the WHO in the update of guidance and development of capacity strengthening materials for the [Analysis and use of health facility data: guidance for maternal, newborn, child and adolescent health \(MNCAH\) programme managers](#). Publicly launched by the WHO in November 2023, the guidance and [capacity strengthening materials](#) describe a catalog of MNCAH indicators that can be monitored through health management information system data and provide instructions on how to analyze and visualize indicators. The guidance is relevant for Ministries of Health, MNCAH program managers at the national and subnational levels, partner organizations supporting MNCAH program implementation, and researchers exploring ways to improve quality of routine health data.



Family Planning & Reproductive Health Indicators Database

D4I is celebrating more than a decade of advancing global health MERL with the [Family Planning \(FP\) and Reproductive Health \(RH\) Indicators Database](#). Since 2013, the digital FP/RH Indicators Database has provided detailed guidance on more than 450 indicators in FP/RH programmatic areas. Each indicator includes a detailed indicator reference sheet with a definition, data requirements, data sources, purposes, and issues. Read this blog post to explore the [Top 10 Most Viewed FP/RH Indicators](#).



Core Components Checklists for High Impact Practices in FP

[High Impact Practices \(HIPs\) in FP](#) are a collection of evidence-informed practices identified by global experts that have demonstrated impact on contraceptive uptake and other related outcomes. D4I conducted a [qualitative assessment](#) of the extent to which 3 of 8 service delivery HIPs—community health workers, mobile outreach service delivery, and immediate postpartum FP—were implemented across several USAID-funded projects in [Bangladesh](#) and [Tanzania](#). Overall, 20 core components for the three service delivery HIPs were developed for the D4I assessment. Learn how projects can [monitor HIPs implementation](#) with the [core components checklist](#). Further, D4I collaborated with the Research for Scalable Solutions (R4S) project and The Challenge Initiative to [harmonize the core components](#).



Assessing Approaches to Demand-side FP Measurement

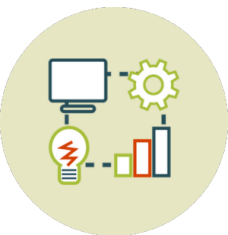
D4I partnered with the International Union for the Scientific Study of Population (IUSSP) [Panel on Rethinking FP Measurement with a Rights and Justice Lens](#) and the Population Council-Kenya to convene an [expert meeting](#) in Mombasa, Kenya. This global convening brought together more than 50 global experts to reexamine FP measurement, focusing on person-centered, context-sensitive approaches. The group also identified measures that can be used to assess FP progress, opportunities, and gaps and discussed ways forward to advance global FP measurement. Learn more from the [meeting report](#).



Global Goods for Strengthening Country Measurement of Child Care and Protection Information Systems

In collaboration with USAID, UNICEF, [Transforming Children's Care Collaborative](#), country governments, and implementers, D4I supported the development and dissemination of guidance, tools, and approaches to measuring child care and protection systems strengthening at the country, regional, and global levels. Explore D4I's approaches and tools that support data use in strengthening care information systems.

- [Supporting Countries to Measure Progress and Outcomes of National Care Reforms: Development of Care System Reform Logic Model and Indicator Mapping](#)
- [Child Protection Case Management Information Systems: Promoting Appropriate Care for Children – A Framework for Engagement](#)
- [Case Management Information System Assessment Toolkit](#)
- [Case Management Information System Governance Guidelines](#)
- [Guidelines on the Use of Data Warehouses in Child Care and Protection Information Management and Analytics](#)
- [Digital Skills Assessment Guide](#)



Private Sector Engagement Self-Assessment Monitoring Tool

The [Private Sector Engagement \(PSE\) Self-Assessment Monitoring \(SAM\) Tool](#) helps USAID Missions and their private sector partners assess and improve their engagement strategies. The tool, piloted in the [Philippines](#) and [Tanzania](#), is available for online use and includes automated analysis and results visualization.

The [PSE-SAM Digital Tool](#) offers a short self-assessment, and can quickly diagnose strengths and areas for improvement. Used collaboratively, the tool supports an inclusive, participatory approach to strengthening engagement and supports sustainable development.

NEWS & UPDATES



Moldovan delegates, D4I, and FRA representatives at the FRA Atrium.
© 2024 Photo courtesy of FRA



Participants at Learning Lab in Bangladesh. © 2022 Shusmita Khan/Data for Impact

New Blog Posts

- [Moldova Study Visit to Austria Enables Knowledge Sharing](#)
- [A Journey of Research Mentorship and Skill Development in Bangladesh](#)
- [Local Capacity Strengthening through Intentional Evaluation Partnerships in Nigeria](#)
- [Gender Competency Training of FP Providers in Ghana](#)



2019 Maheder Haileselassie Tadese/Getty Images/Images of Empowerment/Ethiopia

Sign up for the New Global Health PEARL Project's Newsletter!

The new Global Health Program Evaluation, Analysis, Research, and Learning (Global Health PEARL) project is implemented by a partner consortium led by the Carolina Population Center at the University of North Carolina at Chapel

Hill in partnership with GEMNET-Health, icddr,b, Ifakara Health Institute, Palladium International, Q2 Impact, and Tulane University. The five-year, \$90 million project will run from October 1, 2023, to September 30, 2028.

Co-managed by the Offices of Maternal and Child Health and Nutrition (MCHN) and Population and Reproductive Health (PRH) in USAID's Bureau for Global Health, Global Health PEARL facilitates the effective generation and use of high-quality data and evidence to strengthen policies and program implementation to improve health and save lives in low- and middle-income countries.

Sign up to receive the new Global Health PEARL newsletter and other email alerts about upcoming webinars, knowledge sharing events, and more.

Sign Up

NEW PUBLICATIONS



Journal Articles

- [Changing paradigm of malnutrition among Bangladeshi women of reproductive age and gaps in national Nutrition Policies and Action Plans to tackle the emerging challenge](#)
- [Accounting for Aid: Estimating the Impact of United States' Global Health Investments on Mortality Among Women of Reproductive Age Using Synthetic Control and Bayesian Methods](#)



Reports

- [Resources and Training Models to Strengthen the Gender Competency of Family Planning Providers: A case example from Ghana comparing in-person, blended, and virtual training](#)
- [Care System Reform Performance Indicators](#)
- [Global Insights on Local Leadership in Monitoring, Evaluation, Research and Learning: Webinar Findings & Local Organization Engagements](#)
- [Children's Safety in the Digital Environment: Republic of Moldova](#)
- [Assessment of Age Disaggregation in Routine Family Planning \(FP\) Data](#)
- [MOMENTUM Private Healthcare Delivery: Midterm Performance Evaluation](#)
- [Bangladesh Health Facility Survey 2022: Final Report](#)



Guidance & Tools

- Every Woman Every Newborn-Measurement Improvement for Newborn, Stillbirth & Maternal Indicators (EWEN-MINSMI)
 - [EWEN-MINSMI-PRISM Tools for Routine Health Information Systems](#)
 - [Scoring Guide for EWEN-MINSMI-PRISM Tool 6](#)
- [EN-MINI-PRISM Tools for Routine Health Information Systems](#)

- [Mesurer l'amélioration de la performance en matière de suivi, d'évaluation, de recherche et d'apprentissage \(SERA\)](#)
- [Guidance for Institutionalizing Monitoring and Evaluation \(M&E\), Use of Data, and Information Systems in Pre-Service Education for Social Workers](#)



USAID
FROM THE AMERICAN PEOPLE



This email was produced with the support of the United States Agency for International Development (USAID) under the terms of the Data for Impact (D4I) associate award 7200AA18LA00008, which is implemented by the Carolina Population Center at the University of North Carolina at Chapel Hill, in partnership with Palladium International, LLC; ICF Macro, Inc.; John Snow, Inc.; and Tulane University. The views expressed do not necessarily reflect the views of USAID or the United States government.

[Manage](#) your preferences | [Opt Out](#) using TrueRemove™

Got this as a forward? [Sign up](#) to receive our future emails.

View this email [online](#).

University of North Carolina at Chapel Hill 123 West Franklin Street, Suite 330 | Chapel Hill, NC 27516 US

This email was sent to .

To continue receiving our emails, add us to your address book.

emma

[Subscribe](#) to our email list.